

# Installation Manual

The Norwii Highlight Series presentation clickers (N10s, N95s, and N97s) are advanced remote controls equipped with both a digital pointer and a physical laser pointer, engineered for seamless operation across TV and projection screens. With cool features like highlighting, magnification, digital pointer, and custom cursor/pointer, you can easily capture your audience's attention. **Unlock these advanced features with the official Norwii Presenter companion software.**

## About Software Security & Safety:

- Norwii Presenter software is 100% developed by Norwii's official team and contains no malicious code, viruses, or malware.
- Digitally signed with verified certificates and tested by multiple mainstream antivirus vendors.
- Some antivirus programs may display false-positive warnings because the software is a newly released version—this is a normal security detection mechanism and does not indicate any actual threat.
- You can safely add the software to your antivirus trusted list or whitelist without any concerns.

## Safe Download & Installation:

- Download Norwii Presenter software from Apple Store or from the Norwii official website: <https://www.norwii.com/downloaden/list-168-en.html>
- If your antivirus displays a security prompt, simply select "Allow" or "Add to Trusted List". Follow the installation wizard to complete the setup—the entire process is secure and straightforward
- If you have any questions or concerns, our customer support team is ready to assist you 24/7

## Why You Can Trust Our Software:

- Digital signature verification ensures the software hasn't been tampered with
- Regular security audits and updates maintain the highest safety standards
- We are committed to protecting your data security and privacy
- Thousands of satisfied customers worldwide use our software daily without issues

## Unlock Advanced Features:

With the companion software installed, you'll gain access to:

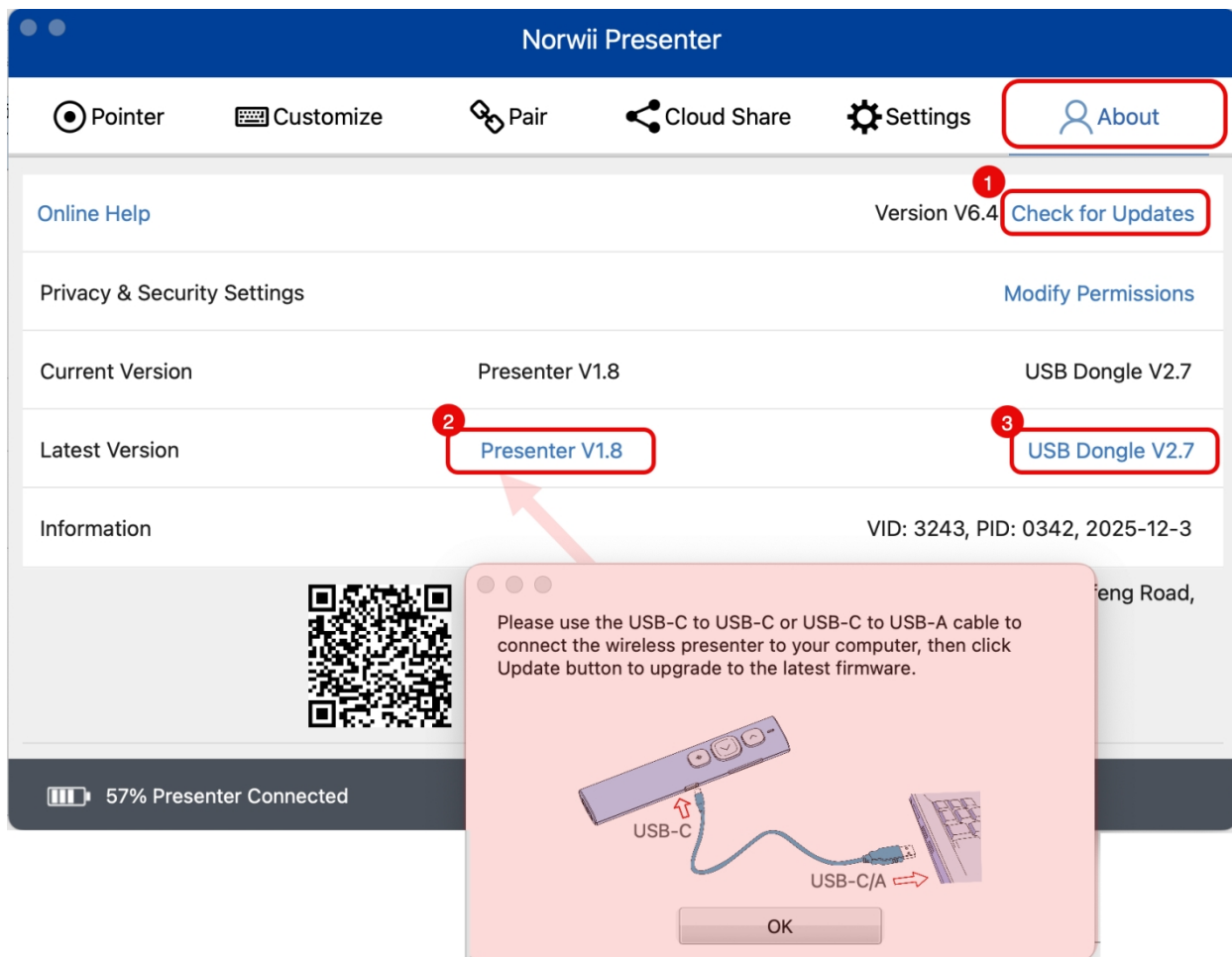
- Customizable button functions and shortcuts
- Advanced timer and countdown settings
- Digital pointer customization options
- Firmware updates for enhanced performance
- Detailed user manual and video tutorials

We stand behind the safety and reliability of our software. Your trust and security are our top priorities.

## Check update of the software and firmware

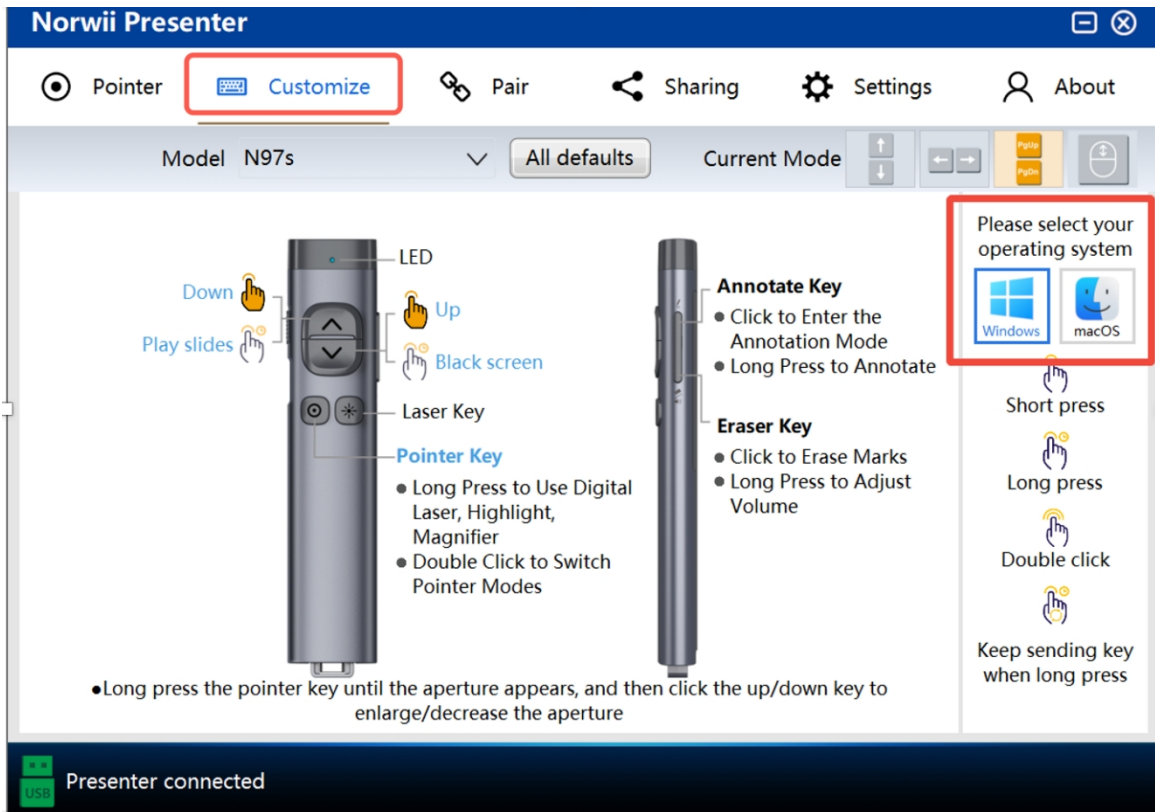
- Run the Norwii Presenter software after successfully installed and upgrade the software to the latest version.
- Disconnect its Bluetooth connection with your computer and connect the wireless presenter with your computer via a USB cable, upgrade the presenter's firmware. Disconnect the USB cable after the upgrade is complete.
- Plug the USB receiver and upgrade the firmware to the latest version.

After the upgrade is complete, please re-plug the USB receiver and restart the wireless presenter.



## Choose operating system.

It's necessary to specify your computer's operating system type in the software.

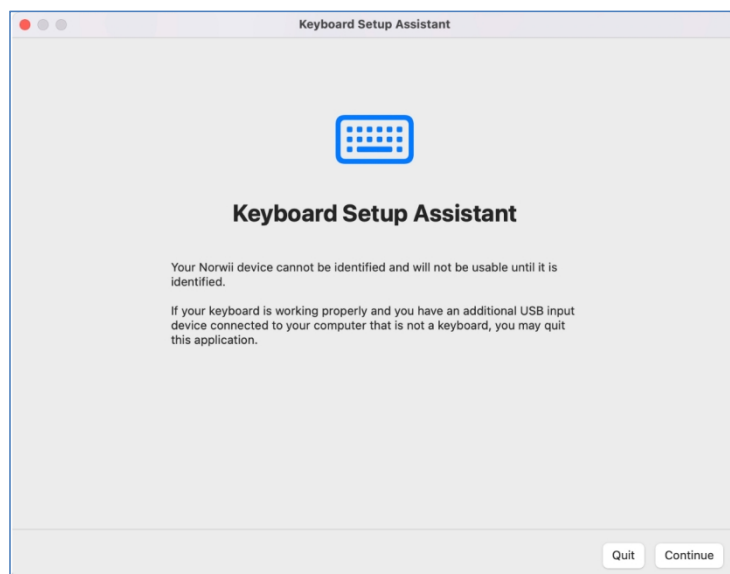


## Set keyboard type as ANSI – for macOS only

Refer to the video guide or follow the steps below to finish the setup:

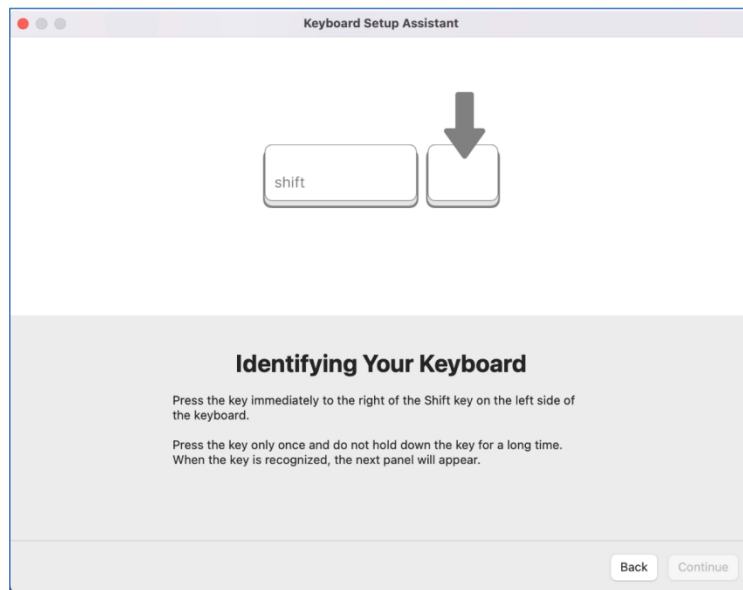
[http://www.norwii.com/upload/newsen/macos\\_usb\\_en.mp4](http://www.norwii.com/upload/newsen/macos_usb_en.mp4)

When the USB receiver is plug into the USB port of a macOS computer for the first time, the "Keyboard Setting Assistant" pops up.

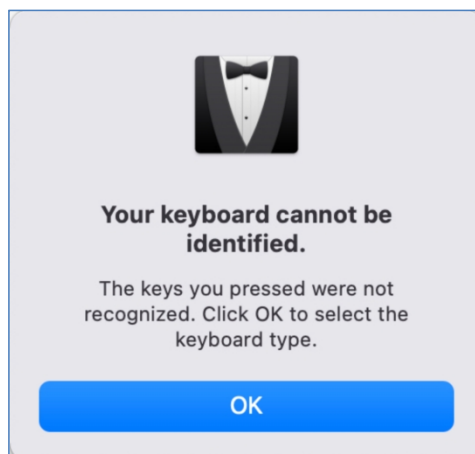


Click "Continue" to pop up the window, Press the up/down key of the wireless presenter several times. Note that this is the up/down key of the wireless presenter, not the key on the

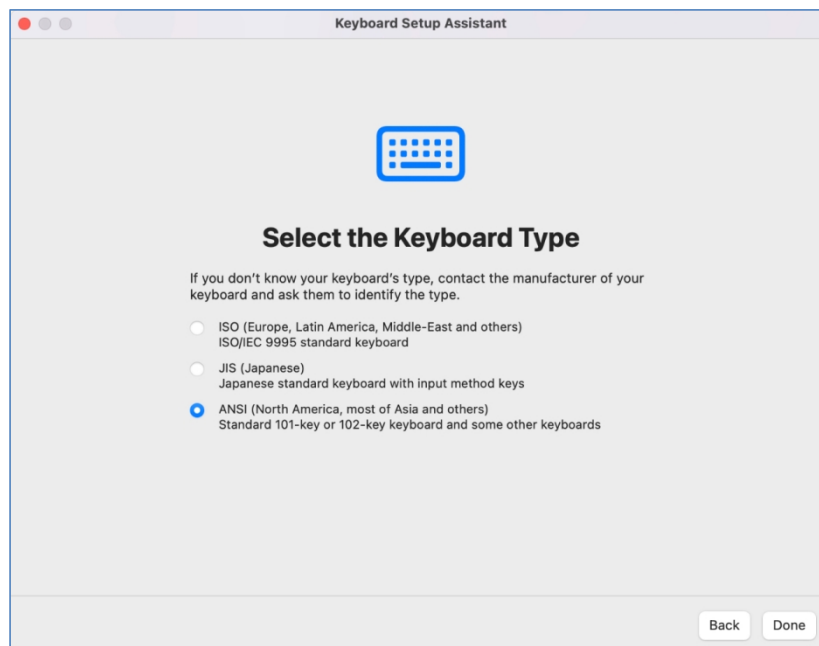
computer keyboard.



After a moment, a window pops up: "Your keyboard cannot be identified".



Click "OK", the window will pop up, select ANSI keyboard type, and click "Done".



If the identification process is interrupted unexpectedly or the window of "Keyboard Setting

Assistant" does not pop up automatically after the USB receiver is inserted, please open it by click Keyboard through "Startup Console" and "System Preferences".

### Enable three permissions – for macOS only

After the software is installed and started, you will be prompted to open the security and privacy permissions required by the system. This software requires three permissions: Input Monitoring, Screen Recording and Accessibility.

Click "Grant Permissions" in the "About" tab of the Norwii Presenter software.

