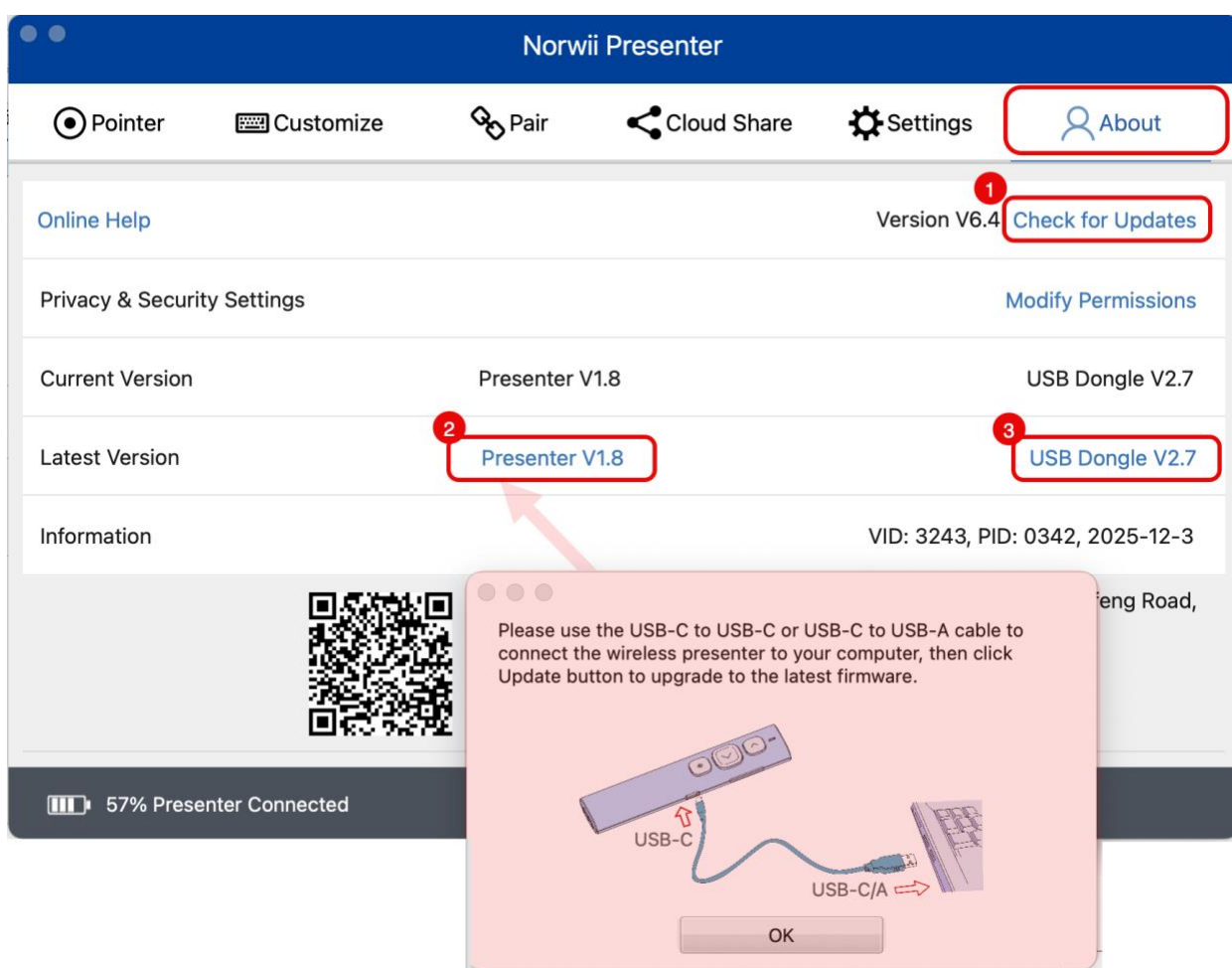


# Installation manual

## 1. Check update of the software and firmware

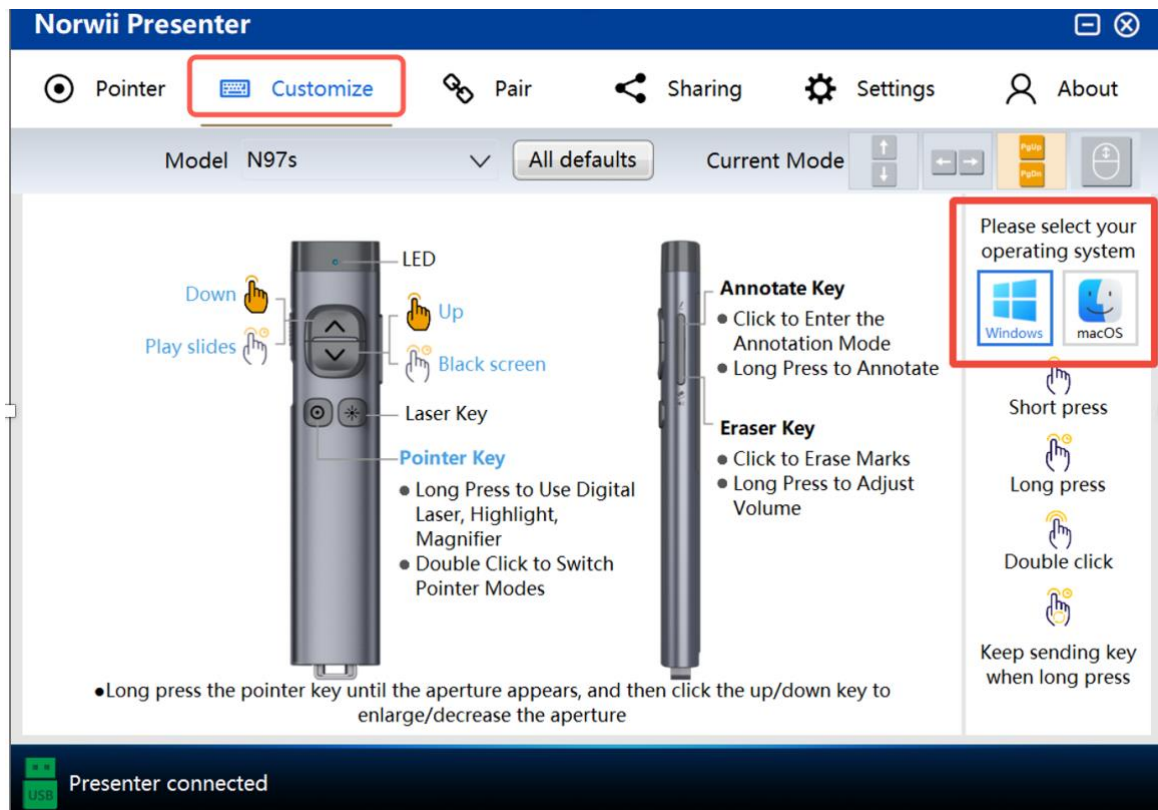
- I. Run the Norwii Presenter software and upgrade the software to the latest version.
- II. Disconnect its Bluetooth connection with your computer and connect the wireless presenter with your computer via USB cable included, upgrade the presenter's firmware. Disconnect the USB cable after the upgrade is complete.
- III. Plug the USB receiver and upgrade the firmware to the latest version.

After the upgrade is complete, please re-plug the USB receiver and restart the wireless presenter.



## 2. Choose operating system.

It's necessary to specify your computer's operating system type in the software.

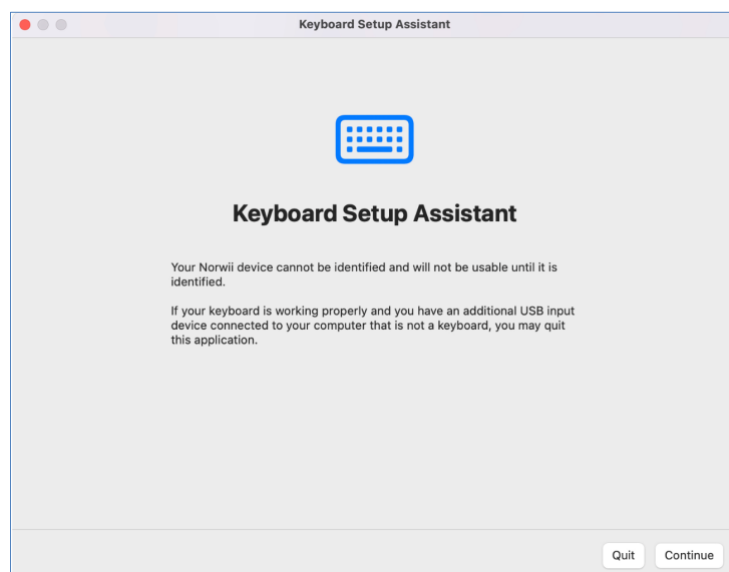


### 3. Set keyboard type as ANSI – for macOS only

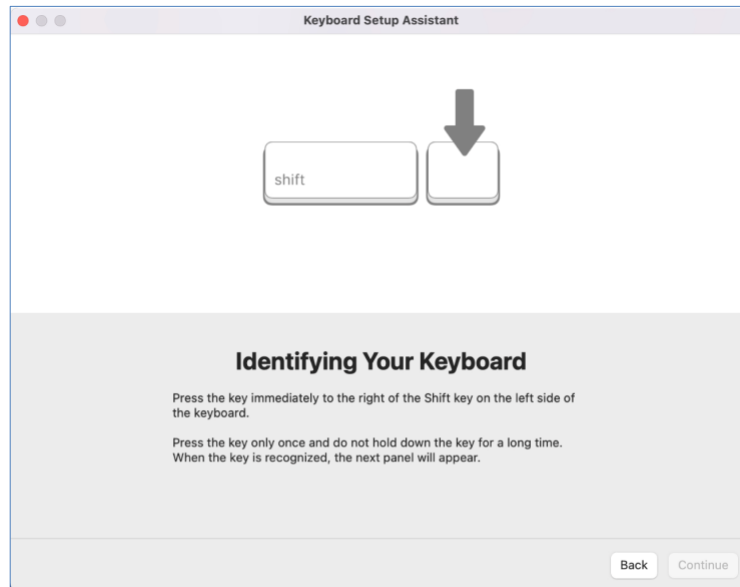
Refer to the video guide or follow the steps below to finish the setup:

[http://www.norwii.com/upload/newsen/macOS\\_usb\\_en.mp4](http://www.norwii.com/upload/newsen/macOS_usb_en.mp4)

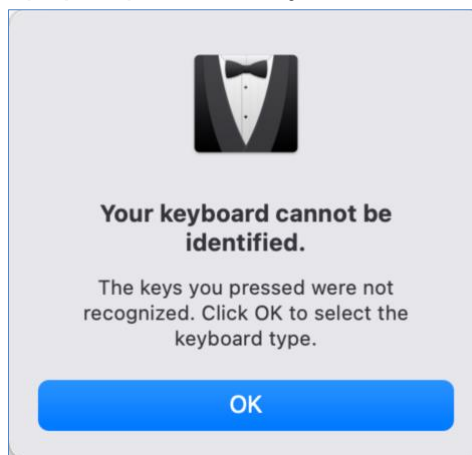
- 1) When the USB receiver is inserted into the USB port of a macOS computer for the first time, the "Keyboard Setting Assistant" pops up.



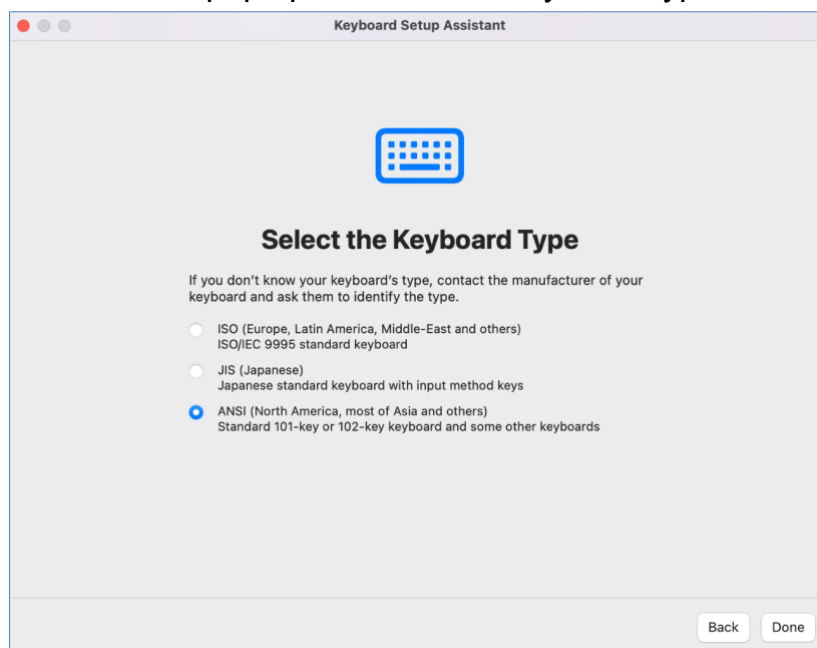
- 2) Click "Continue" to pop up the window, Press the up/down key of the wireless presenter several times. Note that this is the up/down key of the wireless presenter, not the key on the computer keyboard.



3) After a moment, a window pops up: "Your keyboard cannot be identified".



4) Click "OK", the window will pop up, select ANSI keyboard type, and click "Done".



5) If the identification process is interrupted unexpectedly or the window of "Keyboard Setting Assistant" does not pop up automatically after the USB receiver is inserted, please open it by click Keyboard through "Startup Console" and "System Preferences".

Selected Norwii wireless presenter models feature advanced functions such as Digital Laser, Highlight, and Magnifier (N95s Pro, N95s BLE, N97s, N10s Pro, N86s) , to use these features, you need to enable three system permissions.

#### 4. Enable three permissions – for macOS only

After the software is installed and started, you will be prompted to open the security and privacy permissions required by the system. This software requires three permissions: Input Monitoring, Screen Recording and Accessibility.

Click "Grant Permissions" in the "About" tab of the Norwii Presenter software.

